

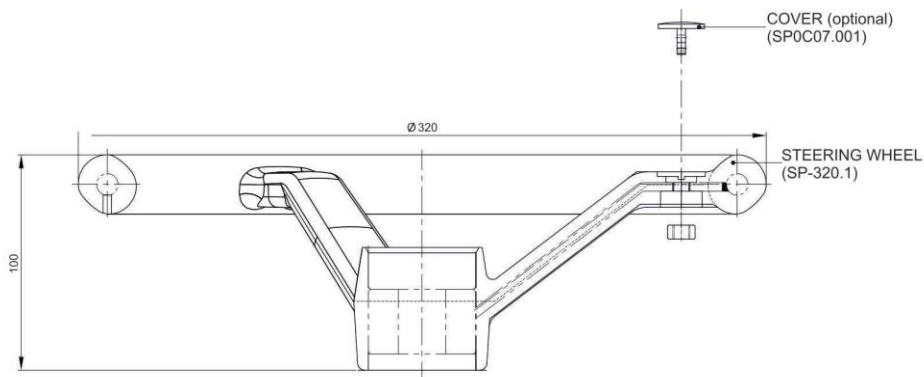
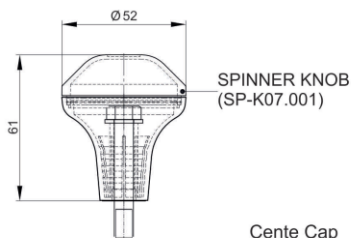
Steering Wheels Catalog



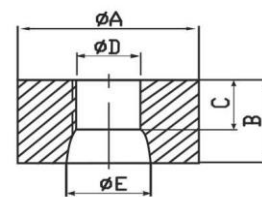
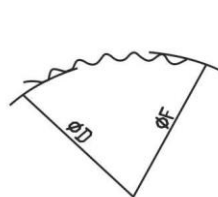
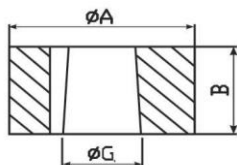
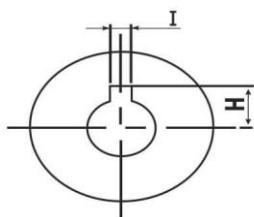
**SYNTHETIC
PRODUCTS
ENTERPRISES
LIMITED**

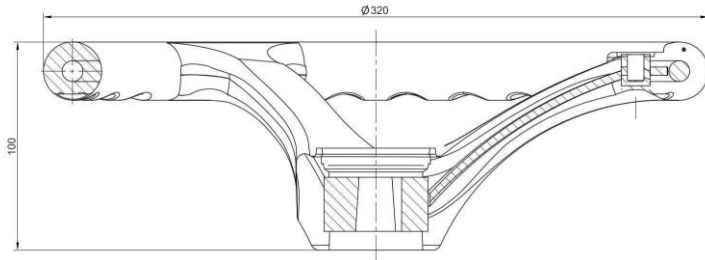
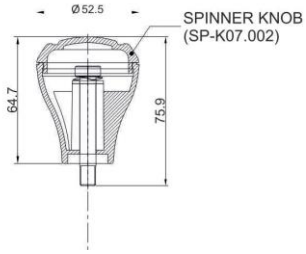
ISO 9001:2000
& 14001 Certified
Company





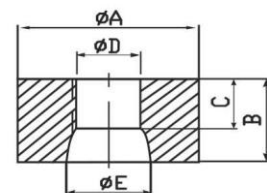
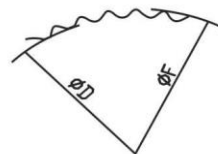
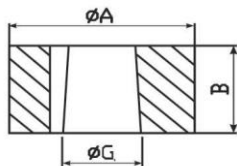
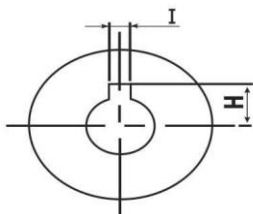
Part No	A	B	C	D	Teeth	Taper	E	F	G	H	I
SP 320.1.001	50	26	/	/	/	1:20	/	/	24.5	15.4	5
SP 320.1.002	50	26	/	/	/	1:20	/	/	21.77	13	5
SP 320.1.003	50	30	15	19.38	36	1:16	21.88	20.68	/	/	/
SP 320.1.004	50	30	14	20.8	36	1:19.26	22.4	22.05	/	/	/
SP 320.1.005	50	26	/	/	/	1:15.31	/	/	19.64	12.4	5
SP 320.1.006	50	30	12	16.8	36	1:12	19.87	18	/	/	/
SP 320.1.007	50	30	14	16.37	40	1:12	19.15	17.52	/	/	/
SP 320.1.008	50	30	18.48	18.2	48	1:3.43	21.56	19.18	/	/	/
SP 320.1.009	50	26	/	/	/	1:17.33	/	/	24.5	15.25	5
SP 320.1.010	50	26	/	/	/	1:7.65	/	/	19.64	12.4	5
SP 320.1.011	50	40	/	18	/	/	/	/	/	/	/
SP 320.1.012	50	30	/	/	/	1:16	/	/	21.88	14.8	5
SP 320.1.013	50	26	/	/	/	1:12	/	/	19	11.5	4.8
SP 320.1.014	50	30	12	14.62	36	1:3.43	19.67	16.937	/	/	/
SP 320.1.015	50	30	/	/	/	1:20	/	/	17.62	10.74	5
SP 320.1.016	50	30	/	/	/	1:20	/	/	24.5	15.4	5
SP 320.1.017	50	30	/	/	/	1:20	/	/	17.87	10.75	5
SP 320.1.019	50	26	/	/	/	1:7.5	/	/	19.2	11.65	5
SP 320.1.020	50	26	/	/	/	1:7.5	/	/	21.6	12.3	5
SP 320.1.021	50	30	24.75	18.2	48	1:3.43	20.83	19.18	/	/	/

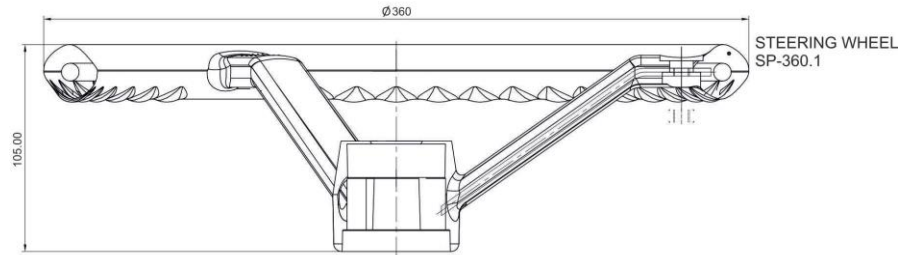
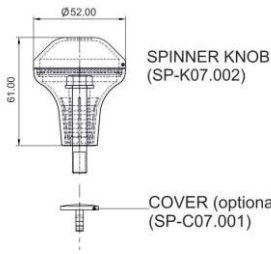




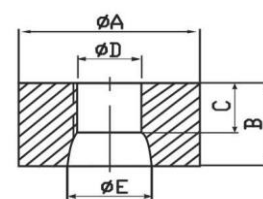
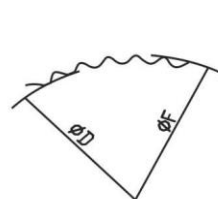
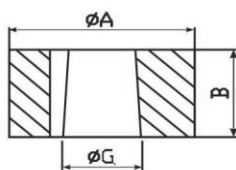
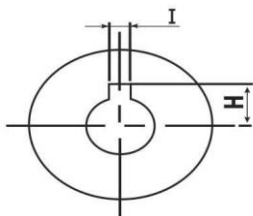
STEERING WHEEL
(SP-320.2)

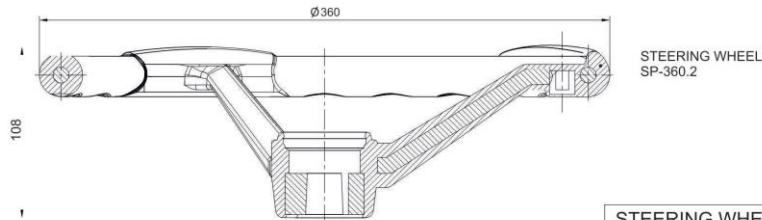
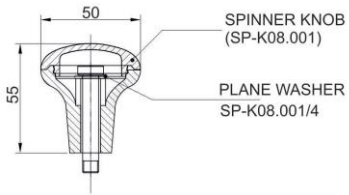
Part No	A	B	C	D	Teeth	Taper	E	F	G	H	I
SP 320.2.001	50	26	/	/	/	1:20	/	/	24.5	15.4	5
SP 320.2.002	50	26	/	/	/	1:20	/	/	21.77	13	5
SP 320.2.003	50	30	15	19.38	36	1:16	21.88	20.68	/	/	/
SP 320.2.004	50	30	14	20.8	36	1:19.26	22.4	22.05	/	/	/
SP 320.2.005	50	26	/	/	/	1:15.31	/	/	19.64	12.4	5
SP 320.2.006	50	30	12	16.8	36	1:12	19.87	18	/	/	/
SP 320.2.007	50	30	14	16.37	40	1:12	19.15	17.52	/	/	/
SP 320.2.008	50	30	18.48	18.2	48	1:3.43	21.56	19.18	/	/	/
SP 320.2.009	50	26	/	/	/	1:17.33	/	/	24.5	15.25	5
SP 320.2.010	50	26	/	/	/	1:7.65	/	/	19.64	12.4	5
SP 320.2.011	50	40	/	18	/	/	/	/	/	/	/
SP 320.2.012	50	30	/	/	/	1:16	/	/	21.88	14.8	5
SP 320.2.013	50	26	/	/	/	1:12	/	/	19	11.5	4.8
SP 320.2.014	50	30	12	14.62	36	1:3.43	19.67	16.937	/	/	/
SP 320.2.015	50	30	/	/	/	1:20	/	/	17.62	10.74	5
SP 320.2.016	50	30	/	/	/	1:20	/	/	24.5	15.4	5
SP 320.2.017	50	30	/	/	/	1:20	/	/	17.87	10.75	5
SP 320.2.019	50	26	/	/	/	1:7.5	/	/	19.2	11.65	5
SP 320.2.020	50	26	/	/	/	1:7.5	/	/	21.6	12.3	5
SP 320.2.021	50	30	24.75	18.2	48	1:3.43	20.83	19.18	/	/	/





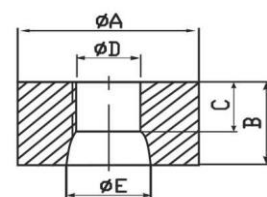
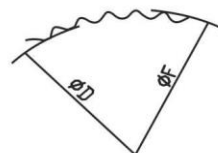
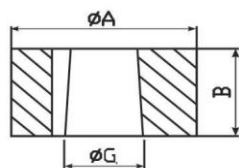
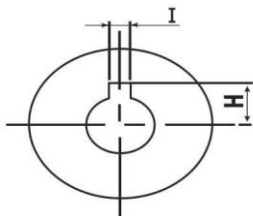
Part No	A	B	C	D	Teeth	Taper	E	F	G	H	I
SP 360.1.001	50	26	/	/	/	1:20	/	/	24.5	15.4	5
SP 360.1.002	50	26	/	/	/	1:20	/	/	21.77	13	5
SP 360.1.003	50	30	15	19.38	36	1:16	21.88	20.68	/	/	/
SP 360.1.004	50	30	14	20.8	36	1:19.26	22.4	22.05	/	/	/
SP 360.1.005	50	26	/	/	/	1:15.31	/	/	19.64	12.4	5
SP 360.1.006	50	30	12	16.8	36	1:12	19.87	18	/	/	/
SP 360.1.007	50	30	14	16.37	40	1:12	19.15	17.52	/	/	/
SP 360.1.008	50	30	18.48	18.2	48	1:3.43	21.56	19.18	/	/	/
SP 360.1.009	50	26	/	/	/	1:17.33	/	/	24.5	15.25	5
SP 360.1.010	50	26	/	/	/	1:7.65	/	/	19.64	12.4	5
SP 360.1.011	50	40	/	18	/	/	/	/	/	/	/
SP 360.1.012	50	30	/	/	/	1:16	/	/	21.88	14.8	5
SP 360.1.013	50	26	/	/	/	1:12	/	/	19	11.5	4.8
SP 360.1.014	50	30	12	14.62	36	1:3.43	19.67	16.937	/	/	/
SP 360.1.015	50	30	/	/	/	1:20	/	/	17.62	10.74	5
SP 360.1.016	50	30	/	/	/	1:20	/	/	24.5	15.4	5
SP 360.1.017	50	30	/	/	/	1:20	/	/	17.87	10.75	5
SP 360.1.019	50	26	/	/	/	1:7.5	/	/	19.2	11.65	5
SP 360.1.020	50	26	/	/	/	1:7.5	/	/	21.6	12.3	5
SP 360.1.021	50	30	24.75	18.2	48	1:3.43	20.83	19.18	/	/	/

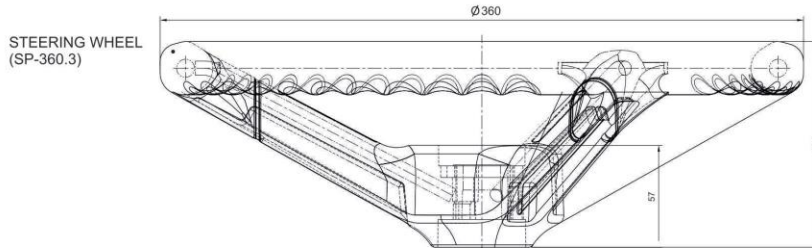
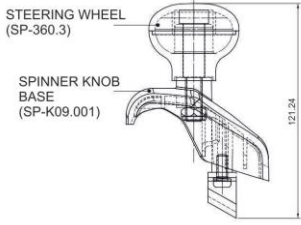




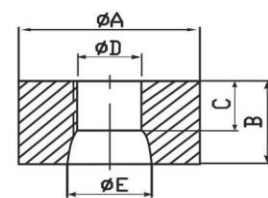
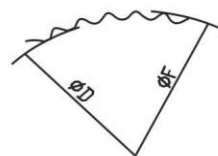
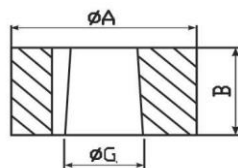
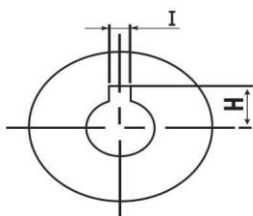
STEERING WHEEL
SP-360.2

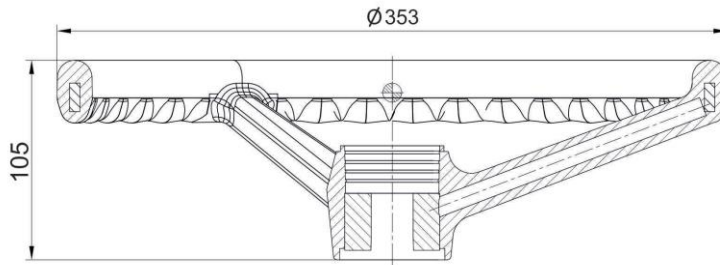
Part No	A	B	C	D	Teeth	Taper	E	F	G	H	I
SP 360.2.001	50	26	/	/	/	1:20	/	/	24.5	15.4	5
SP 360.2.002	50	26	/	/	/	1:20	/	/	21.77	13	5
SP 360.2.003	50	30	15	19.38	36	1:16	21.88	20.68	/	/	/
SP 360.2.004	50	30	14	20.8	36	1:19.26	22.4	22.05	/	/	/
SP 360.2.005	50	26	/	/	/	1:15.31	/	/	19.64	12.4	5
SP 360.2.006	50	30	12	16.8	36	1:12	19.87	18	/	/	/
SP 360.2.007	50	30	14	16.37	40	1:12	19.15	17.52	/	/	/
SP 360.2.008	50	30	18.48	18.2	48	1:3.43	21.56	19.18	/	/	/
SP 360.2.009	50	26	/	/	/	1:17.33	/	/	24.5	15.25	5
SP 360.2.010	50	26	/	/	/	1:7.65	/	/	19.64	12.4	5
SP 360.2.011	50	40	/	18	/	/	/	/	/	/	/
SP 360.2.012	50	30	/	/	/	1:16	/	/	21.88	14.8	5
SP 360.2.013	50	26	/	/	/	1:12	/	/	19	11.5	4.8
SP 360.2.014	50	30	12	14.62	36	1:3.43	19.67	16.937	/	/	/
SP 360.2.015	50	30	/	/	/	1:20	/	/	17.62	10.74	5
SP 360.2.016	50	30	/	/	/	1:20	/	/	24.5	15.4	5
SP 360.2.017	50	30	/	/	/	1:20	/	/	17.87	10.75	5
SP 360.2.019	50	26	/	/	/	1:7.5	/	/	19.2	11.65	5
SP 360.2.020	50	26	/	/	/	1:7.5	/	/	21.6	12.3	5
SP 360.2.021	50	30	24.75	18.2	48	1:3.43	20.83	19.18	/	/	/



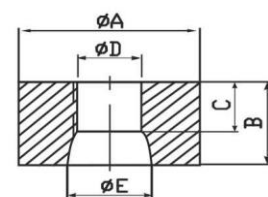
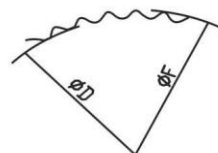
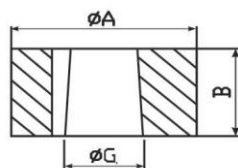
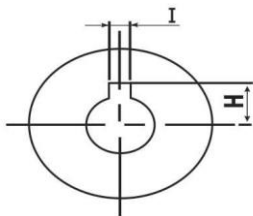


Part No	A	B	C	D	Teeth	Taper	E	F	G	H	I
SP 360.3.001	50	26	/	/	/	1:20	/	/	24.5	15.4	5
SP 360.3.002	50	26	/	/	/	1:20	/	/	21.77	13	5
SP 360.3.003	50	30	15	19.38	36	1:16	21.88	20.68	/	/	/
SP 360.3.004	50	30	14	20.8	36	1:19.26	22.4	22.05	/	/	/
SP 360.3.005	50	26	/	/	/	1:15.31	/	/	19.64	12.4	5
SP 360.3.006	50	30	12	16.8	36	1:12	19.87	18	/	/	/
SP 360.3.007	50	30	14	16.37	40	1:12	19.15	17.52	/	/	/
SP 360.3.008	50	30	18.48	18.2	48	1:3.43	21.56	19.18	/	/	/
SP 360.3.009	50	26	/	/	/	1:17.33	/	/	24.5	15.25	5
SP 360.3.010	50	26	/	/	/	1:7.65	/	/	19.64	12.4	5
SP 360.3.011	50	40	/	18	/	/	/	/	/	/	/
SP 360.3.012	50	30	/	/	/	1:16	/	/	21.88	14.8	5
SP 360.3.013	50	26	/	/	/	1:12	/	/	19	11.5	4.8
SP 360.3.014	50	30	12	14.62	36	1:3.43	19.67	16.937	/	/	/
SP 360.3.015	50	30	/	/	/	1:20	/	/	17.62	10.74	5
SP 360.3.016	50	30	/	/	/	1:20	/	/	24.5	15.4	5
SP 360.3.017	50	30	/	/	/	1:20	/	/	17.87	10.75	5
SP 360.3.019	50	26	/	/	/	1:7.5	/	/	19.2	11.65	5
SP 360.3.020	50	26	/	/	/	1:7.5	/	/	21.6	12.3	5
SP 360.3.021	50	30	24.75	18.2	48	1:3.43	20.83	19.18	/	/	/

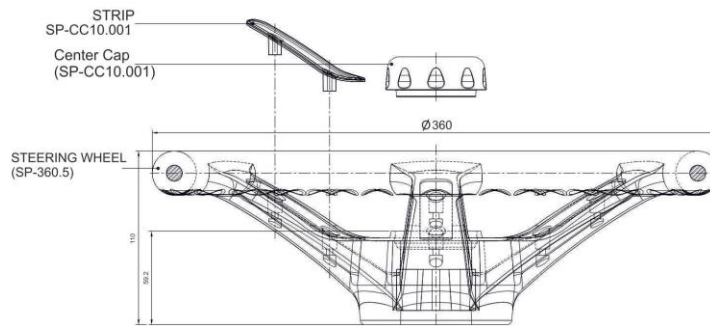




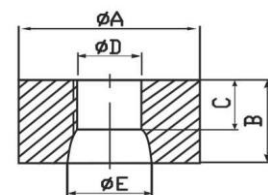
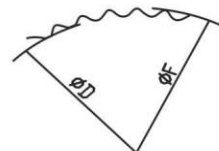
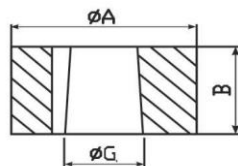
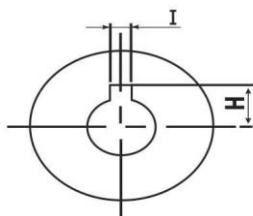
Part No	A	B	C	D	Teeth	Taper	E	F	G	H	I
SP 360.4.001	50	26	/	/	/	1:20	/	/	24.5	15.4	5
SP 360.4.002	50	26	/	/	/	1:20	/	/	21.77	13	5
SP 360.4.003	50	30	15	19.38	36	1:16	21.88	20.68	/	/	/
SP 360.4.004	50	30	14	20.8	36	1:19.26	22.4	22.05	/	/	/
SP 360.4.005	50	26	/	/	/	1:15.31	/	/	19.64	12.4	5
SP 360.4.006	50	30	12	16.8	36	1:12	19.87	18	/	/	/
SP 360.4.007	50	30	14	16.37	40	1:12	19.15	17.52	/	/	/
SP 360.4.008	50	30	18.48	18.2	48	1:3.43	21.56	19.18	/	/	/
SP 360.4.009	50	26	/	/	/	1:17.33	/	/	24.5	15.25	5
SP 360.4.010	50	26	/	/	/	1:7.65	/	/	19.64	12.4	5
SP 360.4.011	50	40	/	18	/	/	/	/	/	/	/
SP 360.4.012	50	30	/	/	/	1:16	/	/	21.88	14.8	5
SP 360.4.013	50	26	/	/	/	1:12	/	/	19	11.5	4.8
SP 360.4.014	50	30	12	14.62	36	1:3.43	19.67	16.937	/	/	/
SP 360.4.015	50	30	/	/	/	1:20	/	/	17.62	10.74	5
SP 360.4.016	50	30	/	/	/	1:20	/	/	24.5	15.4	5
SP 360.4.017	50	30	/	/	/	1:20	/	/	17.87	10.75	5
SP 360.4.019	50	26	/	/	/	1:7.5	/	/	19.2	11.65	5
SP 360.4.020	50	26	/	/	/	1:7.5	/	/	21.6	12.3	5
SP 360.4.021	50	30	24.75	18.2	48	1:3.43	20.83	19.18	/	/	/



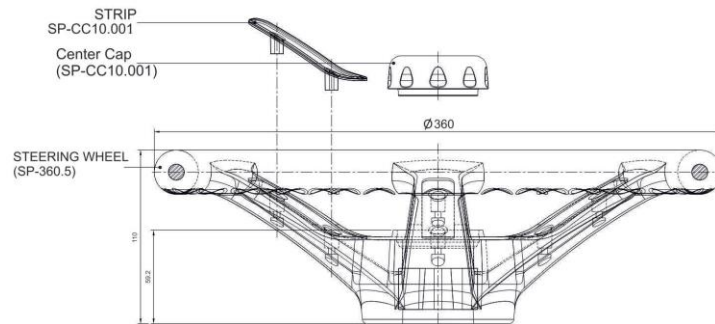
Steering Wheel SP-360.5-B



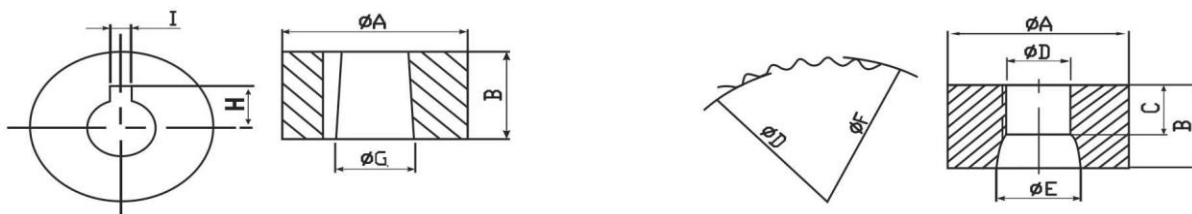
Part No	A	B	C	D	Teeth	Taper	E	F	G	H	I
SP 360.5.001	50	26	/	/	/	1:20	/	/	24.5	15.4	5
SP 360.5.002	50	26	/	/	/	1:20	/	/	21.77	13	5
SP 360.5.003	50	30	15	19.38	36	1:16	21.88	20.68	/	/	/
SP 360.5.004	50	30	14	20.8	36	1:19.26	22.4	22.05	/	/	/
SP 360.5.005	50	26	/	/	/	1:15.31	/	/	19.64	12.4	5
SP 360.5.006	50	30	12	16.8	36	1:12	19.87	18	/	/	/
SP 360.5.007	50	30	14	16.37	40	1:12	19.15	17.52	/	/	/
SP 360.5.008	50	30	18.48	18.2	48	1:3.43	21.56	19.18	/	/	/
SP 360.5.009	50	26	/	/	/	1:17.33	/	/	24.5	15.25	5
SP 360.5.010	50	26	/	/	/	1:7.65	/	/	19.64	12.4	5
SP 360.5.011	50	40	/	18	/	/	/	/	/	/	/
SP 360.5.012	50	30	/	/	/	1:16	/	/	21.88	14.8	5
SP 360.5.013	50	26	/	/	/	1:12	/	/	19	11.5	4.8
SP 360.5.014	50	30	12	14.62	36	1:3.43	19.67	16.937	/	/	/
SP 360.5.015	50	30	/	/	/	1:20	/	/	17.62	10.74	5
SP 360.5.016	50	30	/	/	/	1:20	/	/	24.5	15.4	5
SP 360.5.017	50	30	/	/	/	1:20	/	/	17.87	10.75	5
SP 360.5.019	50	26	/	/	/	1:7.5	/	/	19.2	11.65	5
SP 360.5.020	50	26	/	/	/	1:7.5	/	/	21.6	12.3	5
SP 360.5.021	50	30	24.75	18.2	48	1:3.43	20.83	19.18	/	/	/



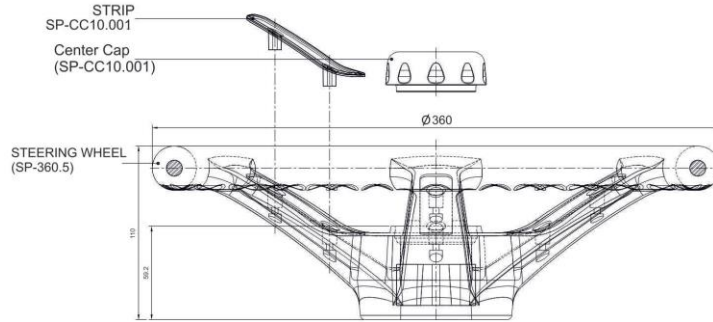
Steering Wheel SP-360.5-G



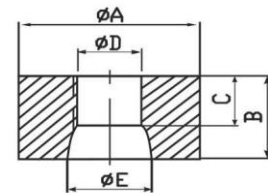
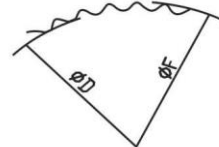
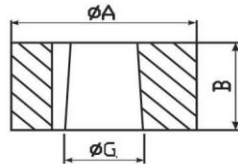
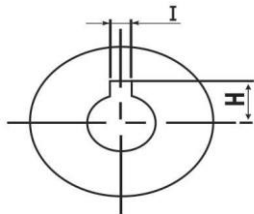
Part No	A	B	C	D	Teeth	Taper	E	F	G	H	I
SP 360.5.001	50	26	/	/	/	1:20	/	/	24.5	15.4	5
SP 360.5.002	50	26	/	/	/	1:20	/	/	21.77	13	5
SP 360.5.003	50	30	15	19.38	36	1:16	21.88	20.68	/	/	/
SP 360.5.004	50	30	14	20.8	36	1:19.26	22.4	22.05	/	/	/
SP 360.5.005	50	26	/	/	/	1:15.31	/	/	19.64	12.4	5
SP 360.5.006	50	30	12	16.8	36	1:12	19.87	18	/	/	/
SP 360.5.007	50	30	14	16.37	40	1:12	19.15	17.52	/	/	/
SP 360.5.008	50	30	18.48	18.2	48	1:3.43	21.56	19.18	/	/	/
SP 360.5.009	50	26	/	/	/	1:17.33	/	/	24.5	15.25	5
SP 360.5.010	50	26	/	/	/	1:7.65	/	/	19.64	12.4	5
SP 360.5.011	50	40	/	18	/	/	/	/	/	/	/
SP 360.5.012	50	30	/	/	/	1:16	/	/	21.88	14.8	5
SP 360.5.013	50	26	/	/	/	1:12	/	/	19	11.5	4.8
SP 360.5.014	50	30	12	14.62	36	1:3.43	19.67	16.937	/	/	/
SP 360.5.015	50	30	/	/	/	1:20	/	/	17.62	10.74	5
SP 360.5.016	50	30	/	/	/	1:20	/	/	24.5	15.4	5
SP 360.5.017	50	30	/	/	/	1:20	/	/	17.87	10.75	5
SP 360.5.019	50	26	/	/	/	1:7.5	/	/	19.2	11.65	5
SP 360.5.020	50	26	/	/	/	1:7.5	/	/	21.6	12.3	5
SP 360.5.021	50	30	24.75	18.2	48	1:3.43	20.83	19.18	/	/	/



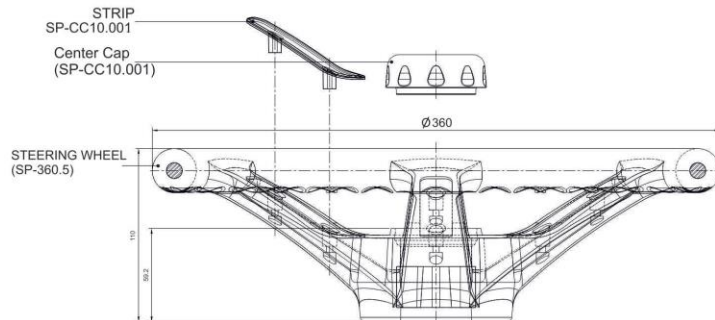
Steering Wheel SP-360.5-R



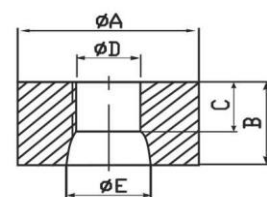
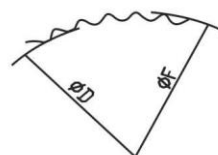
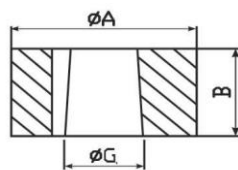
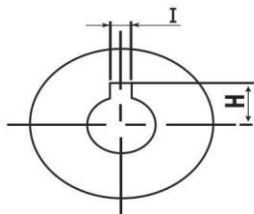
Part No	A	B	C	D	Teeth	Taper	E	F	G	H	I
SP 360.5.001	50	26	/	/	/	1:20	/	/	24.5	15.4	5
SP 360.5.002	50	26	/	/	/	1:20	/	/	21.77	13	5
SP 360.5.003	50	30	15	19.38	36	1:16	21.88	20.68	/	/	/
SP 360.5.004	50	30	14	20.8	36	1:19.26	22.4	22.05	/	/	/
SP 360.5.005	50	26	/	/	/	1:15.31	/	/	19.64	12.4	5
SP 360.5.006	50	30	12	16.8	36	1:12	19.87	18	/	/	/
SP 360.5.007	50	30	14	16.37	40	1:12	19.15	17.52	/	/	/
SP 360.5.008	50	30	18.48	18.2	48	1:3.43	21.56	19.18	/	/	/
SP 360.5.009	50	26	/	/	/	1:17.33	/	/	24.5	15.25	5
SP 360.5.010	50	26	/	/	/	1:7.65	/	/	19.64	12.4	5
SP 360.5.011	50	40	/	18	/	/	/	/	/	/	/
SP 360.5.012	50	30	/	/	/	1:16	/	/	21.88	14.8	5
SP 360.5.013	50	26	/	/	/	1:12	/	/	19	11.5	4.8
SP 360.5.014	50	30	12	14.62	36	1:3.43	19.67	16.937	/	/	/
SP 360.5.015	50	30	/	/	/	1:20	/	/	17.62	10.74	5
SP 360.5.016	50	30	/	/	/	1:20	/	/	24.5	15.4	5
SP 360.5.017	50	30	/	/	/	1:20	/	/	17.87	10.75	5
SP 360.5.019	50	26	/	/	/	1:7.5	/	/	19.2	11.65	5
SP 360.5.020	50	26	/	/	/	1:7.5	/	/	21.6	12.3	5
SP 360.5.021	50	30	24.75	18.2	48	1:3.43	20.83	19.18	/	/	/

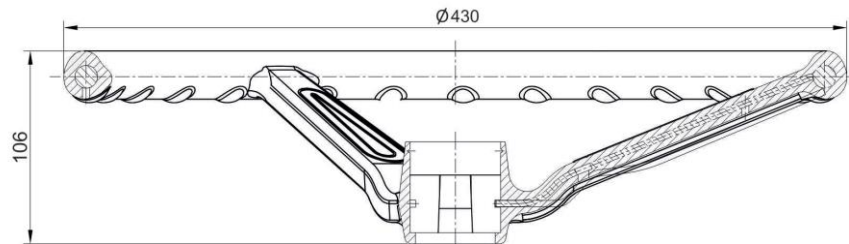


Steering Wheel SP-360.5-S

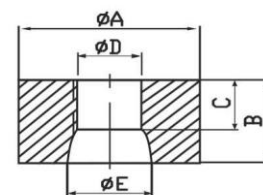
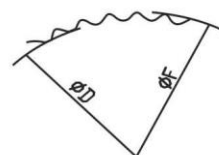
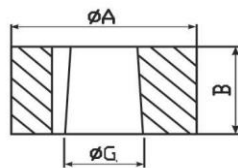
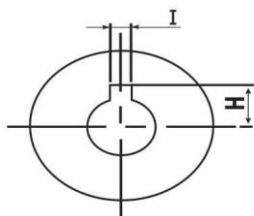


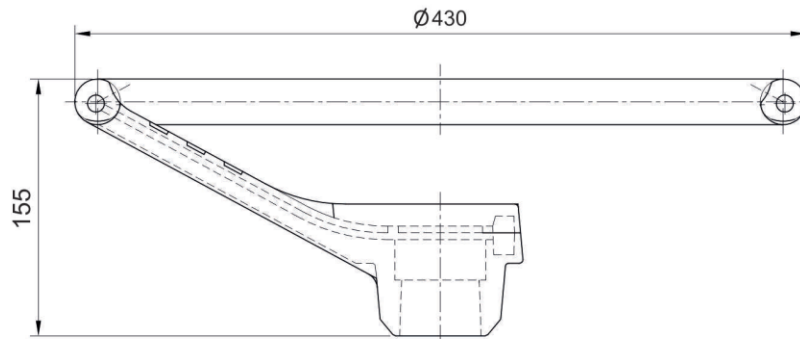
Part No	A	B	C	D	Teeth	Taper	E	F	G	H	I
SP 360.5.001	50	26	/	/	/	1:20	/	/	24.5	15.4	5
SP 360.5.002	50	26	/	/	/	1:20	/	/	21.77	13	5
SP 360.5.003	50	30	15	19.38	36	1:16	21.88	20.68	/	/	/
SP 360.5.004	50	30	14	20.8	36	1:19.26	22.4	22.05	/	/	/
SP 360.5.005	50	26	/	/	/	1:15.31	/	/	19.64	12.4	5
SP 360.5.006	50	30	12	16.8	36	1:12	19.87	18	/	/	/
SP 360.5.007	50	30	14	16.37	40	1:12	19.15	17.52	/	/	/
SP 360.5.008	50	30	18.48	18.2	48	1:3.43	21.56	19.18	/	/	/
SP 360.5.009	50	26	/	/	/	1:17.33	/	/	24.5	15.25	5
SP 360.5.010	50	26	/	/	/	1:7.65	/	/	19.64	12.4	5
SP 360.5.011	50	40	/	18	/	/	/	/	/	/	/
SP 360.5.012	50	30	/	/	/	1:16	/	/	21.88	14.8	5
SP 360.5.013	50	26	/	/	/	1:12	/	/	19	11.5	4.8
SP 360.5.014	50	30	12	14.62	36	1:3.43	19.67	16.937	/	/	/
SP 360.5.015	50	30	/	/	/	1:20	/	/	17.62	10.74	5
SP 360.5.016	50	30	/	/	/	1:20	/	/	24.5	15.4	5
SP 360.5.017	50	30	/	/	/	1:20	/	/	17.87	10.75	5
SP 360.5.019	50	26	/	/	/	1:7.5	/	/	19.2	11.65	5
SP 360.5.020	50	26	/	/	/	1:7.5	/	/	21.6	12.3	5
SP 360.5.021	50	30	24.75	18.2	48	1:3.43	20.83	19.18	/	/	/



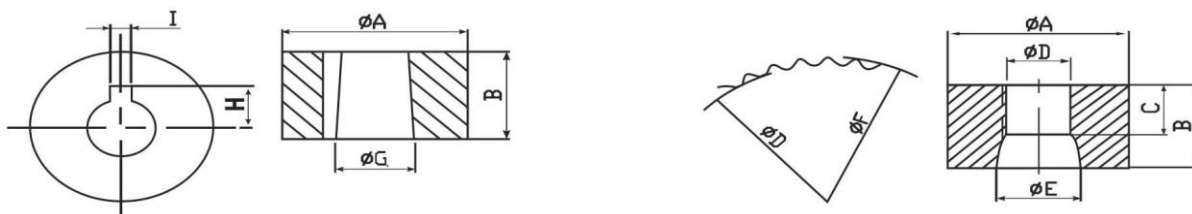


Part No	A	B	C	D	Teeth	Taper	E	F	G	H	I
SP 430.1.001	50	26	/	/	/	1:20	/	/	24.5	15.4	5
SP 430.1.002	50	26	/	/	/	1:20	/	/	21.77	13	5
SP 430.1.003	50	30	15	19.38	36	1:16	21.88	20.68	/	/	/
SP 430.1.004	50	30	14	20.8	36	1:19.26	22.4	22.05	/	/	/
SP 430.1.005	50	26	/	/	/	1:15.31	/	/	19.64	12.4	5
SP 430.1.006	50	30	12	16.8	36	1:12	19.87	18	/	/	/
SP 430.1.007	50	30	14	16.37	40	1:12	19.15	17.52	/	/	/
SP 430.1.008	50	30	18.48	18.2	48	1:3.43	21.56	19.18	/	/	/
SP 430.1.009	50	26	/	/	/	1:17.33	/	/	24.5	15.25	5
SP 430.1.010	50	26	/	/	/	1:7.65	/	/	19.64	12.4	5
SP 430.1.011	50	40	/	18	/	/	/	/	/	/	/
SP 430.1.012	50	30	/	/	/	1:16	/	/	21.88	14.8	5
SP 430.1.013	50	26	/	/	/	1:12	/	/	19	11.5	4.8
SP 430.1.014	50	30	12	14.62	36	1:3.43	19.67	16.937	/	/	/
SP 430.1.015	50	30	/	/	/	1:20	/	/	17.62	10.74	5
SP 430.1.016	50	30	/	/	/	1:20	/	/	24.5	15.4	5
SP 430.1.017	50	30	/	/	/	1:20	/	/	17.87	10.75	5
SP 430.1.019	50	26	/	/	/	1:7.5	/	/	19.2	11.65	5
SP 430.1.020	50	26	/	/	/	1:7.5	/	/	21.6	12.3	5
SP 430.1.021	50	30	24.75	18.2	48	1:3.43	20.83	19.18	/	/	/





Part No	A	B	C	D	Teeth	Taper	E	F	G	H	I
SP 430.2.001	50	26	/	/	/	1:20	/	/	24.5	15.4	5
SP 430.2.002	50	26	/	/	/	1:20	/	/	21.77	13	5
SP 430.2.003	50	30	15	19.38	36	1:16	21.88	20.68	/	/	/
SP 430.2.004	50	30	14	20.8	36	1:19.26	22.4	22.05	/	/	/
SP 430.2.005	50	26	/	/	/	1:15.31	/	/	19.64	12.4	5
SP 430.2.006	50	30	12	16.8	36	1:12	19.87	18	/	/	/
SP 430.2.007	50	30	14	16.37	40	1:12	19.15	17.52	/	/	/
SP 430.2.008	50	30	18.48	18.2	48	1:3.43	21.56	19.18	/	/	/
SP 430.2.009	50	26	/	/	/	1:17.33	/	/	24.5	15.25	5
SP 430.2.010	50	26	/	/	/	1:7.65	/	/	19.64	12.4	5
SP 430.2.011	50	40	/	18	/	/	/	/	/	/	/
SP 430.2.012	50	30	/	/	/	1:16	/	/	21.88	14.8	5
SP 430.2.013	50	26	/	/	/	1:12	/	/	19	11.5	4.8
SP 430.2.014	50	30	12	14.62	36	1:3.43	19.67	16.937	/	/	/
SP 430.2.015	50	30	/	/	/	1:20	/	/	17.62	10.74	5
SP 430.2.016	50	30	/	/	/	1:20	/	/	24.5	15.4	5
SP 430.2.017	50	30	/	/	/	1:20	/	/	17.87	10.75	5
SP 430.2.019	50	26	/	/	/	1:7.5	/	/	19.2	11.65	5
SP 430.2.020	50	26	/	/	/	1:7.5	/	/	21.6	12.3	5
SP 430.2.021	50	30	24.75	18.2	48	1:3.43	20.83	19.18	/	/	/





SP-MK07RE.001



SP-MK07OR.001



SP-MK09.001



SP-MK09.002



SP-MK09.003



SP-MK10.002



SP-MK10.003



SP-MK10.004



SP-MK10.005



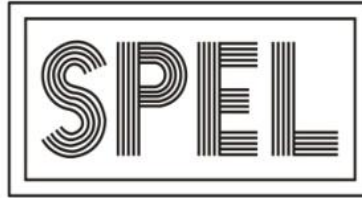
SP-MK10.006



SP-MK10.007



SP-MK11.001



SYNTHETIC PRODUCTS ENTERPRISES LTD.

127-S, Q.I.E. Township, Kotlakhpat Lahore-Pakistan

Tel: +92-42-35115506, 35115507, Fax: +92-42-35118507

E-mail: export@spelgroup.com



www.steeringwheel.com.pk